

DongFang Low-Temperature Wind turbine

2017-February-7th Skellefteå

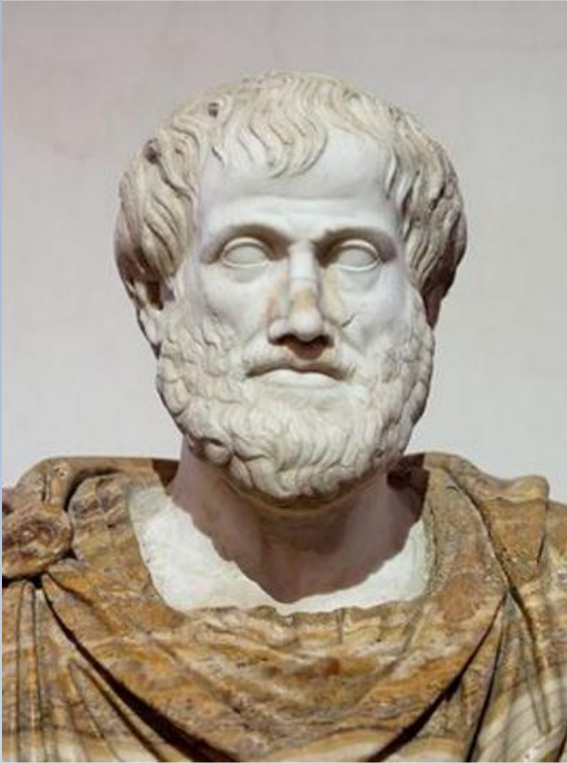
Winter Wind

Presenter: Chen Ke

Dong Fang Electrical Corporation, China



Presentation content



* Who am I?

* Why am I here?

* Where am I going?



Who am I?



- * Dong Fang Electrical Corporation(DEC), China
- * National Strategic manufacturer company
- * Thermal power, Hydropower and wind power

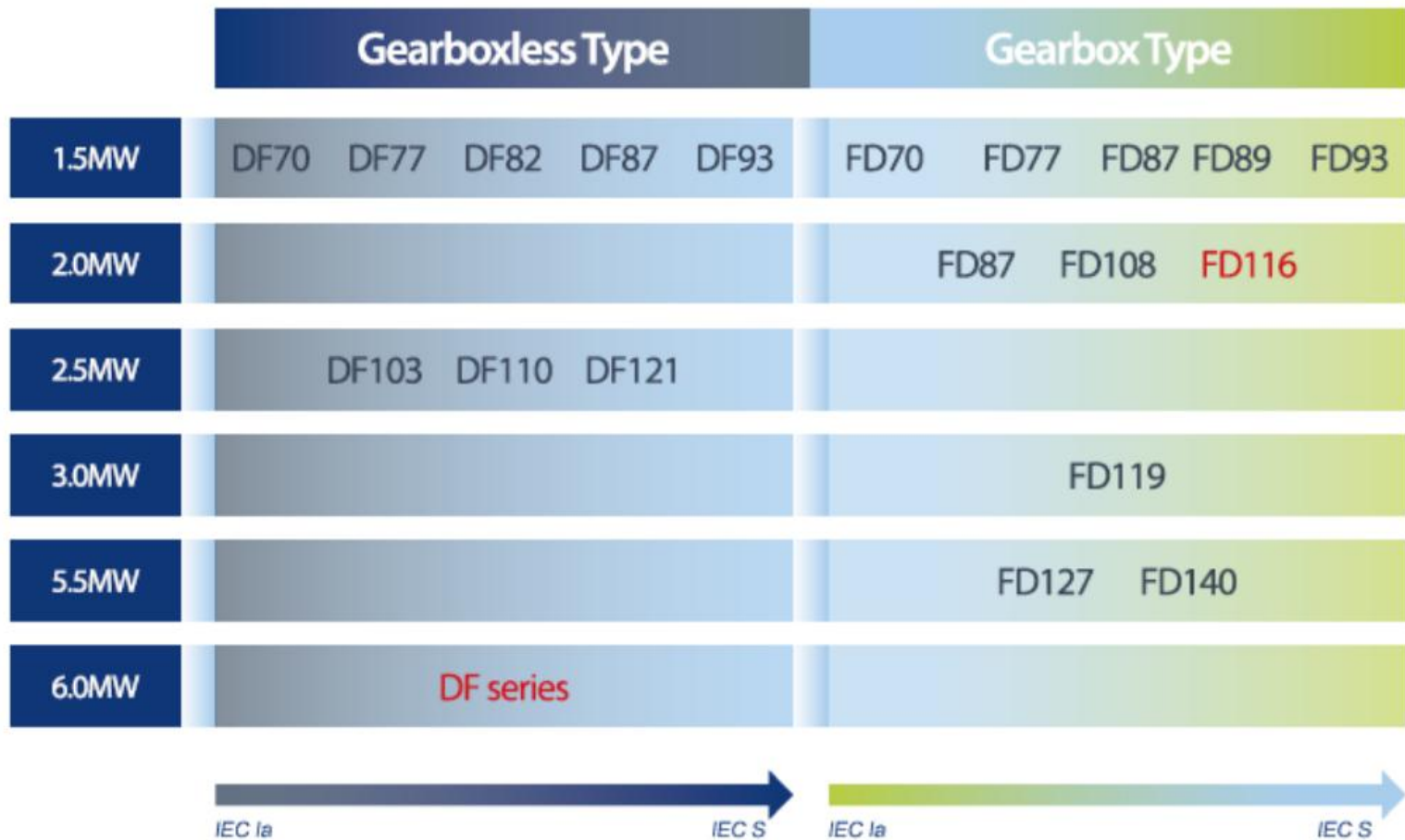


Wind power of DEC

- * DEC extended its business into wind power in the year 2004.
- * Manufacture 3500 wind turbines per year.
- * Build Wind project as EPC contractor.



Dong Fang Wind turbine



- * DEC supplied 39 wind turbines for Blaiken Wind Farm, Sweden;
- * Model: DF 110 LT(Low Temperature) 2.5MW

Why am I here?

- * Learn the most advanced technology and information in the conference
- * Find potential customer and cooperative partner in Europe
- * Share experience and information in this conference each other
- * What can I share with you?



De-icing system of Dong Fang Turbine

**De-icing system:
integrated by DEC**

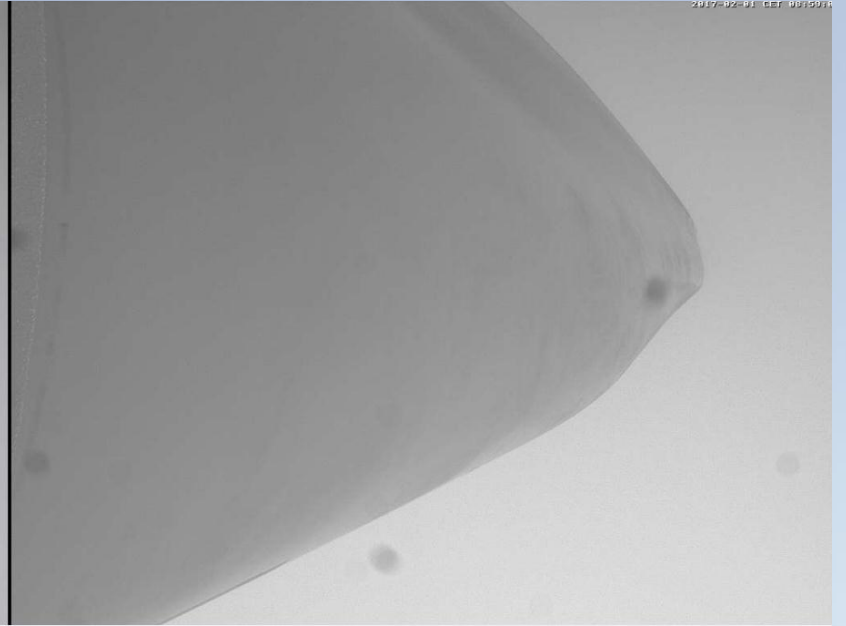
**Carbon textile system:
Joint designed by DEC&**

**Hot air system(HAS):
Designed by DEC**



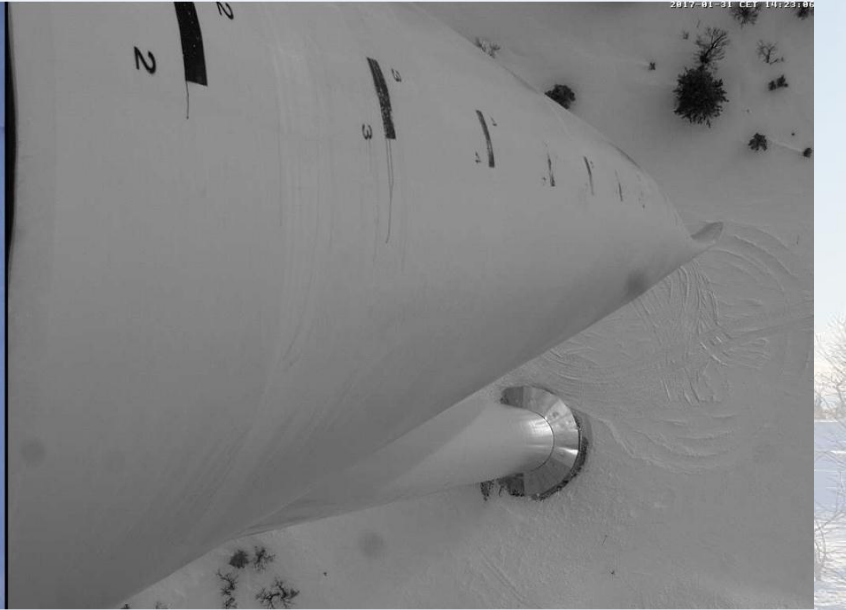
http://robotfix.com

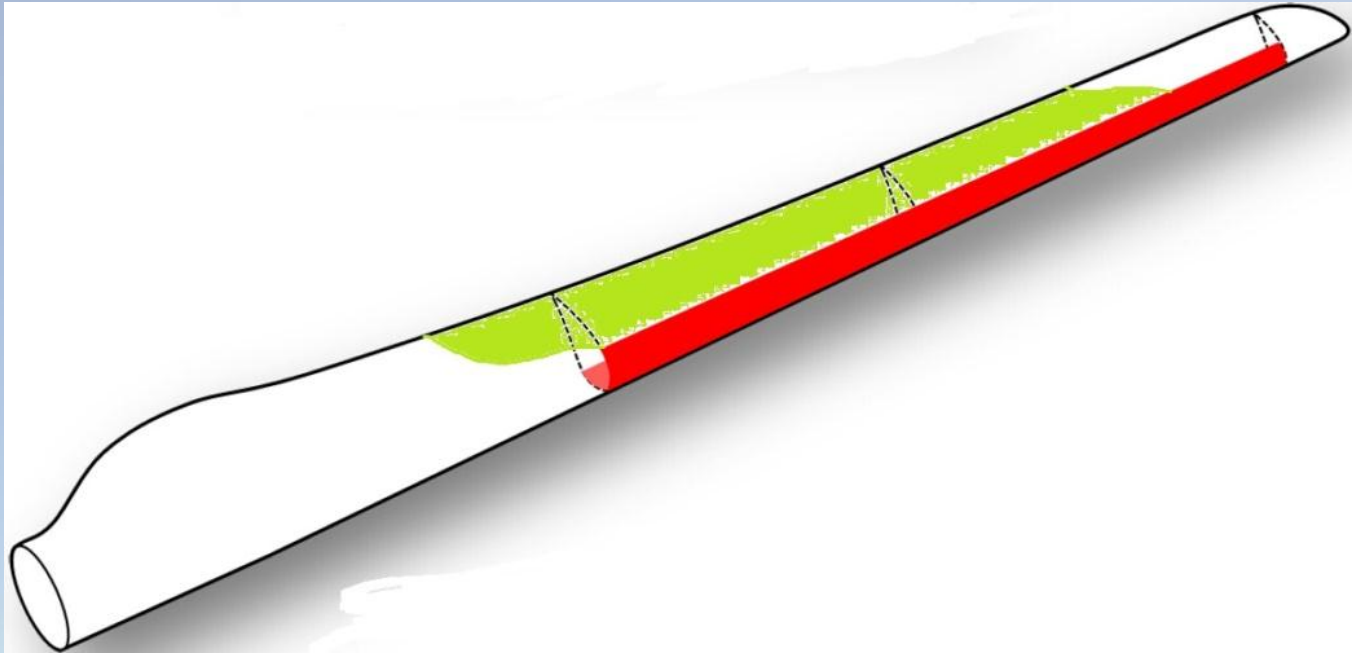
2017-02-01 CET 09:50:11

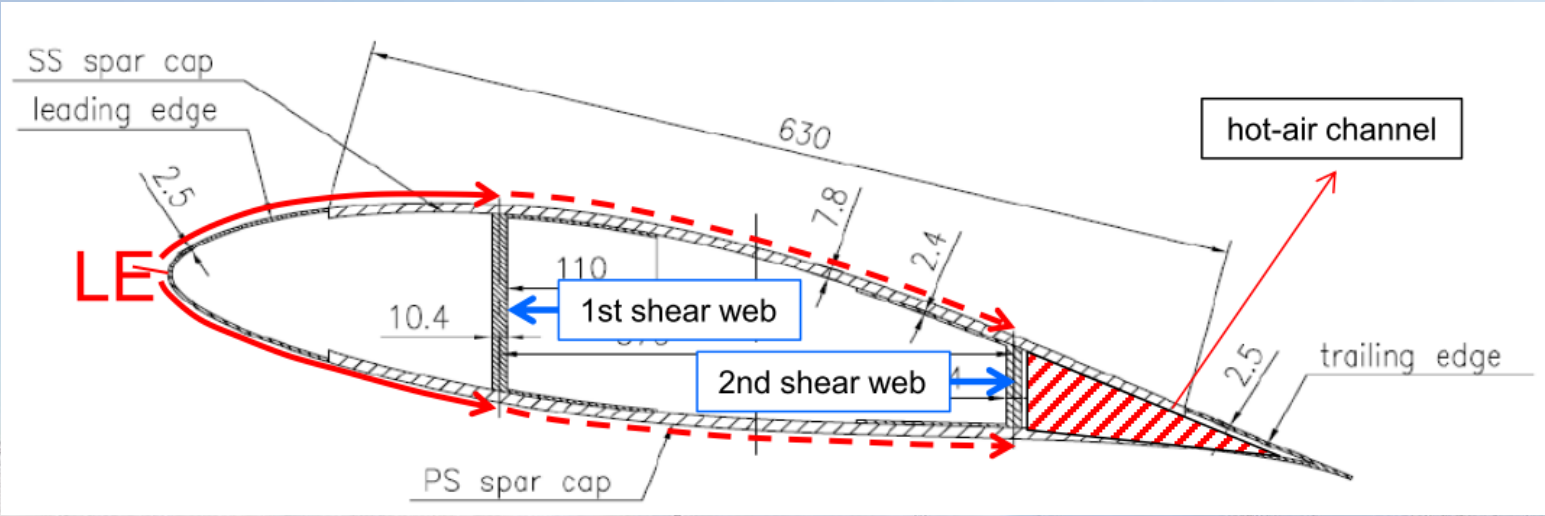
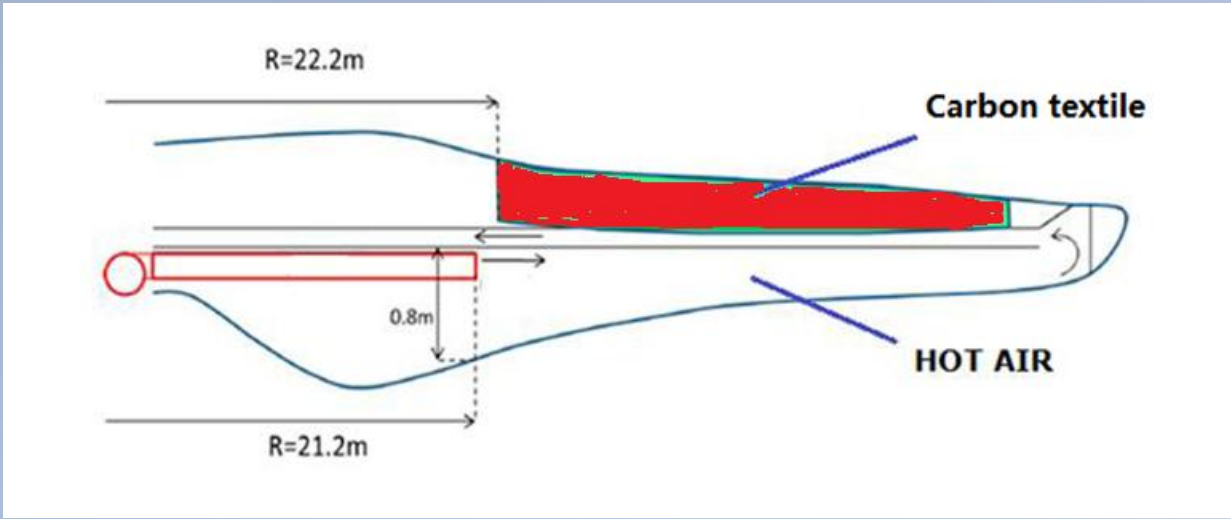


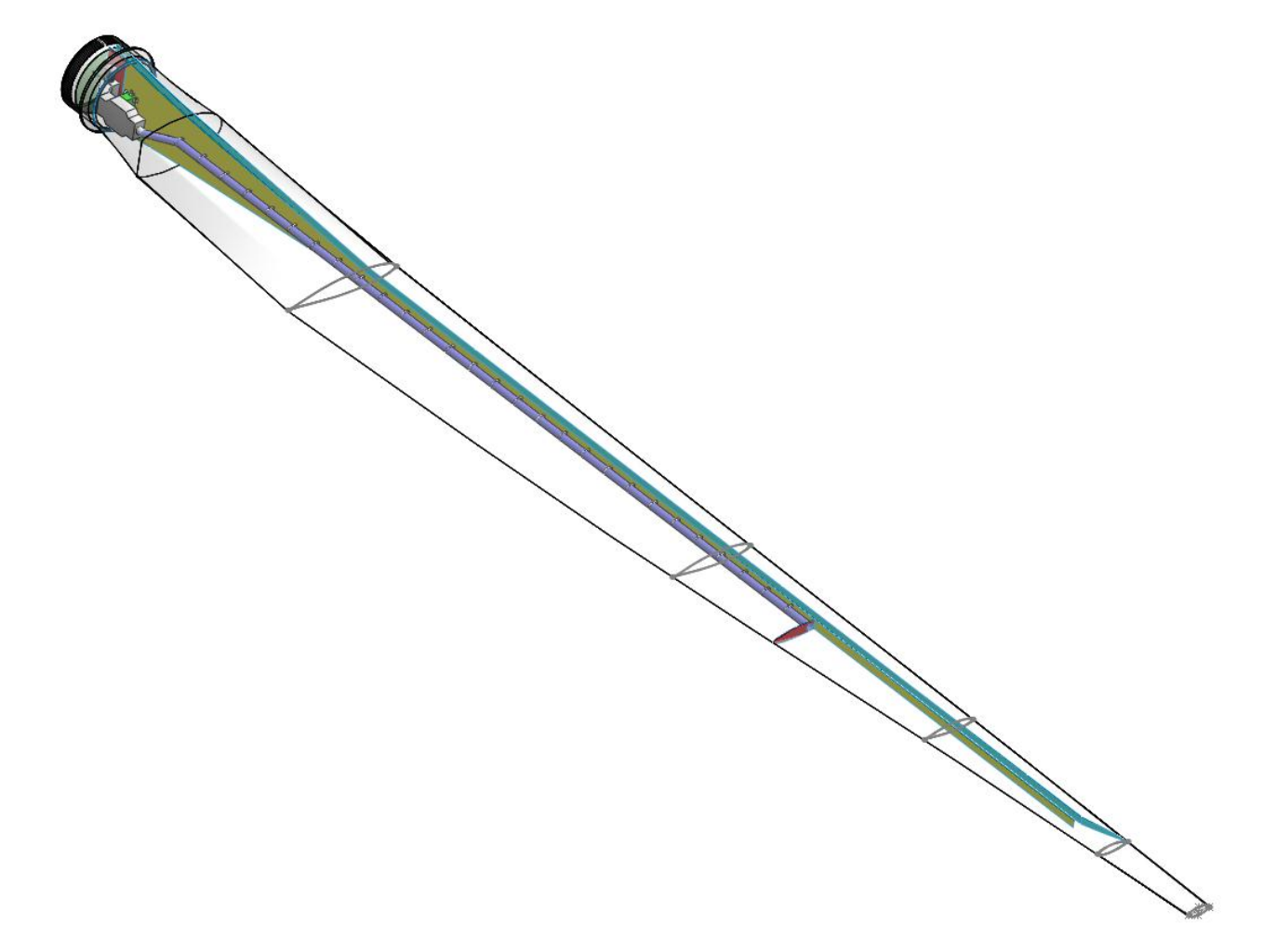
http://robotfix.com

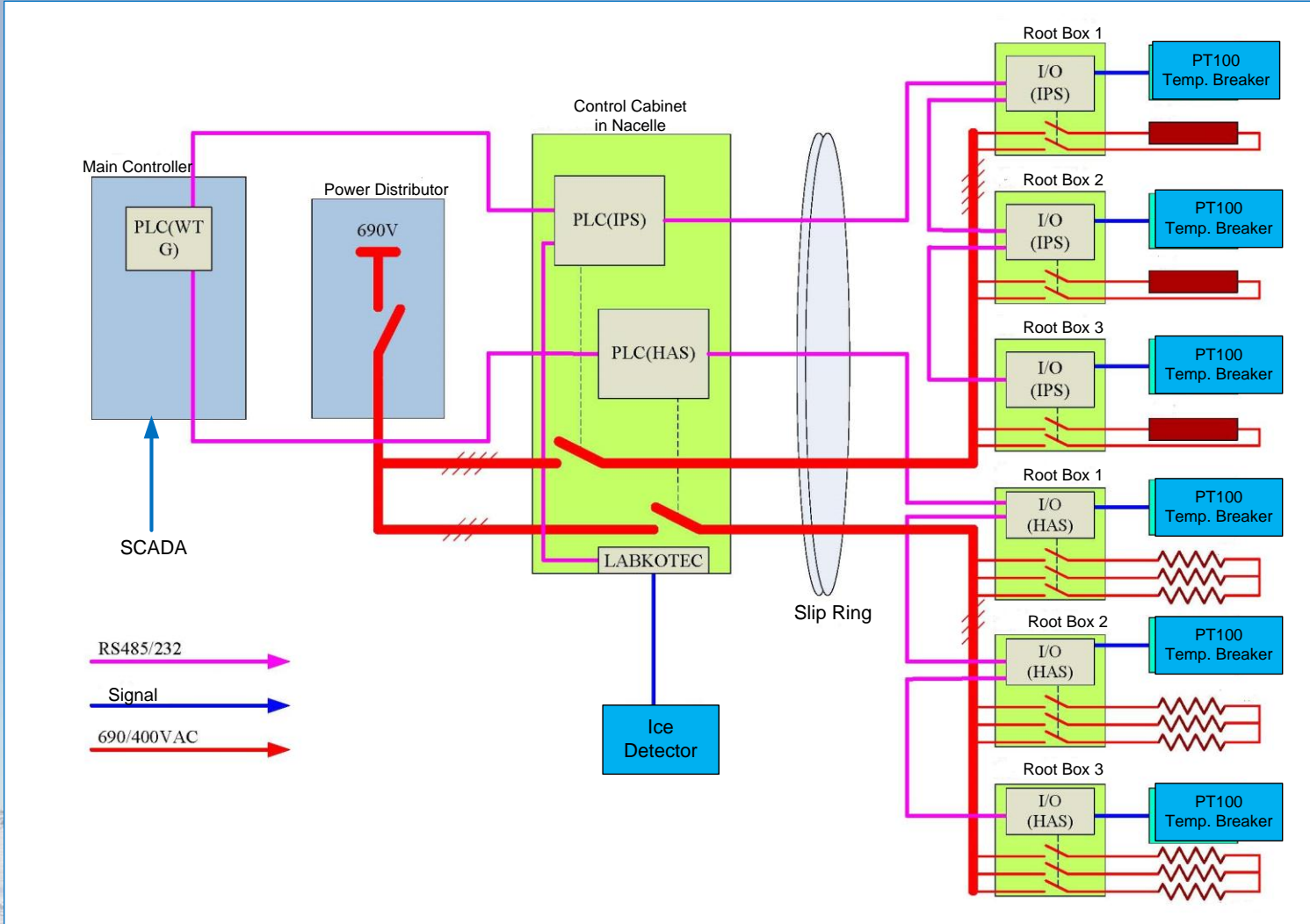
2017-01-31 CET 10:23:00











Where am I going (Further work)

- * Optimize the algorithm and control program of the De-icing system.
- * Optimize the carbon textile layout on the surface of the blade.
- * Some method independent from hardware detector to analyze the condition of blade. Such as comparing power output with power curve, image processing analysis on SCADA server.



The End Thank you



- * Chen Ke
- * Email : chenke01@dongfang.com
- * Company: Dong Fang electrical Corporation Limited
- * Address: 333 Shuhan road, Chengdu, Sichuan 610036, P. R. China